

Customer:  
Metro Sia

Project address:  
Jelgavas iela

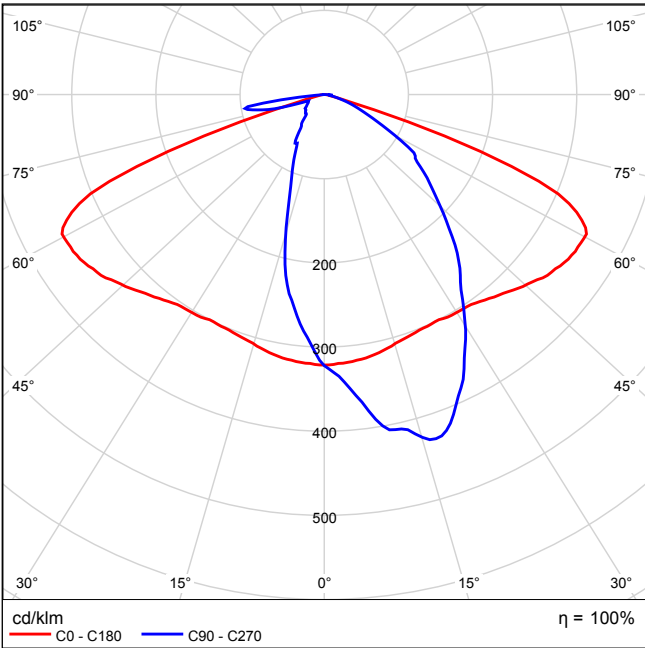
Date:  
2015.02.25.

+371 63081530  
siametro@inbox.lv

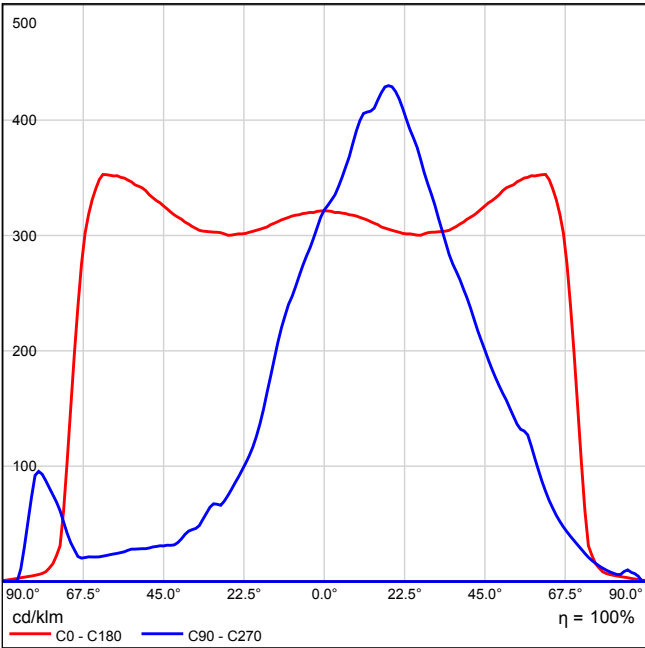
## **Kalnciems Jelgavas iela**

See our luminaire catalog for an image of the luminaire.

Luminous emittance 1 / Polar LDC

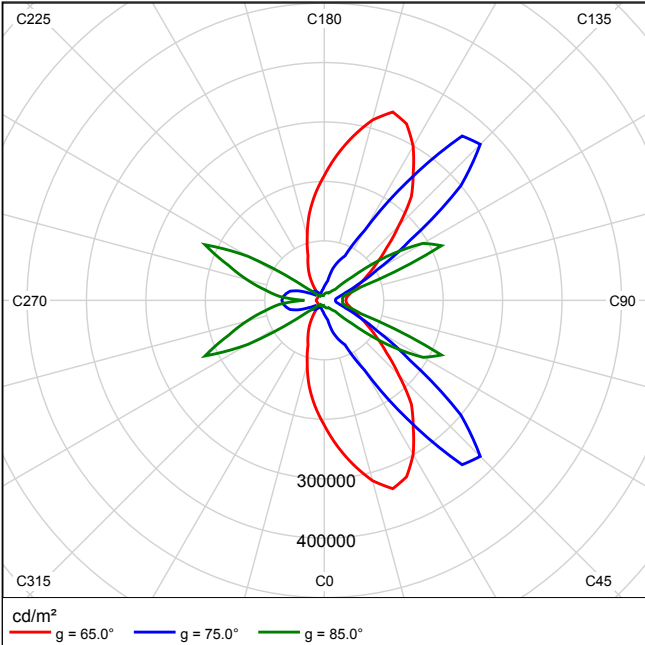


Luminous emittance 1 / Linear LDC



It is not possible to generate a cone diagram, as the light distribution is asymmetrical.

Luminous emittance 1 / Luminance diagram



It is not possible to generate a UGR diagram, as the light distribution is asymmetrical.

## Roadway 1 (ME4a) / Results summary

Maintenance factor: 0.67  
 Grid: 11 x 6 Points  
 Selected Lighting Class: ME4a  
 Accompanying Street Elements:

Roadway 1                      Width: 5.000 m  
                                      Number of Lanes: 2  
                                      Surface (dry): CIE C1  
                                      q0 (dry): 0.100  
                                      Surface (wet): Wet surface W3  
                                      q0 (wet): 0.200

	Lm [cd/m²]	U0	UI	TI [%]	SR
Actual value according to calculation	1.99	0.64	0.40	4	0.65
Required values according to class	≥ 0.50	≥ 0.35	≥ 0.40	≤ 15	≥ 0.50
Fulfilled/Not fulfilled	✓	✓	✓	✓	✓

### Assigned Observer (2):

Observer	Position [m]	Lm [cd/m²]	U0	UI	TI [%]
Observer 1	(-60, 1,25, 1,5)	1.99	0.64	0.40	4
Observer 2	(-60, 3,75, 1,5)	2.01	0.66	0.51	4

Roadway 1 (ME4a) / Isolines

Maintenance factor: 0.67  
Grid: 11 x 6 Points  
Selected Lighting Class: ME4a  
Accompanying Street Elements:

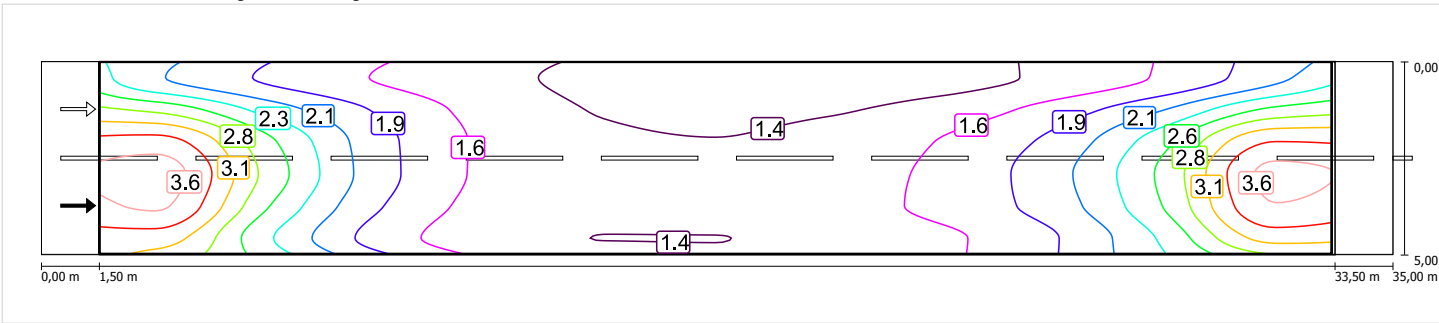
Roadway 1

Width: 5.000 m  
Number of Lanes: 2  
Surface (dry): CIE C1  
q0 (dry): 0.100  
Surface (wet): Wet surface W3  
q0 (wet): 0.200

	Lm [cd/m²]	U0	UI	TI [%]	SR
Actual value according to calculation	1.99	0.64	0.40	4	0.65
Required values according to class	≥ 0.50	≥ 0.35	≥ 0.40	≤ 15	≥ 0.50
Fulfilled/Not fulfilled	✓	✓	✓	✓	✓

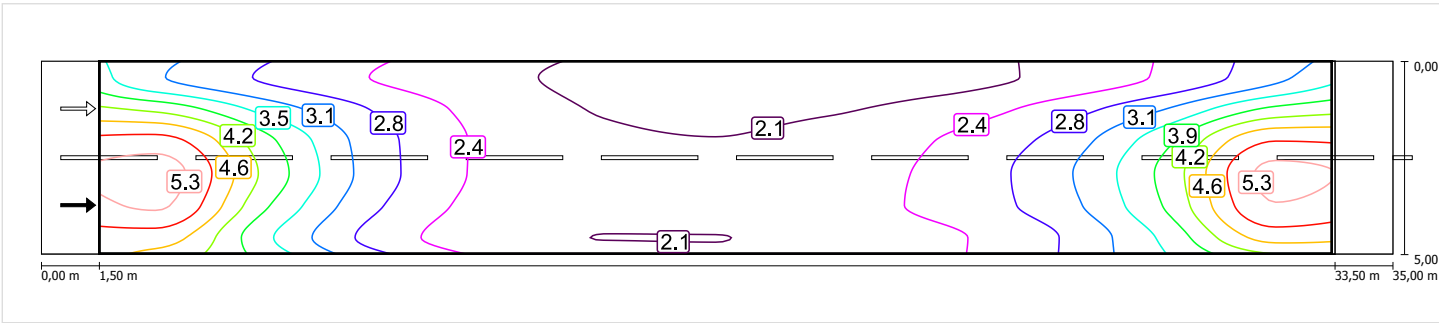
Observer 1

Luminance with dry roadway



Scale: 1 : 200

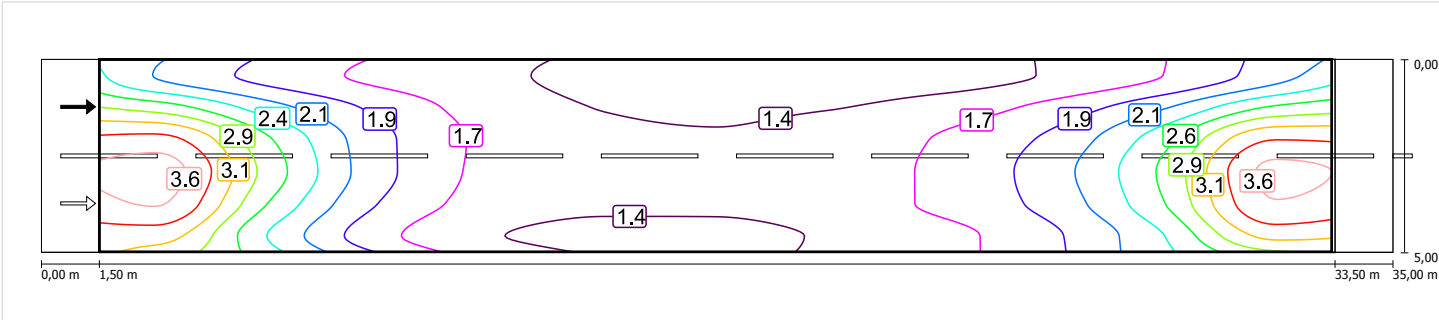
Luminance with new lamp



Scale: 1 : 200

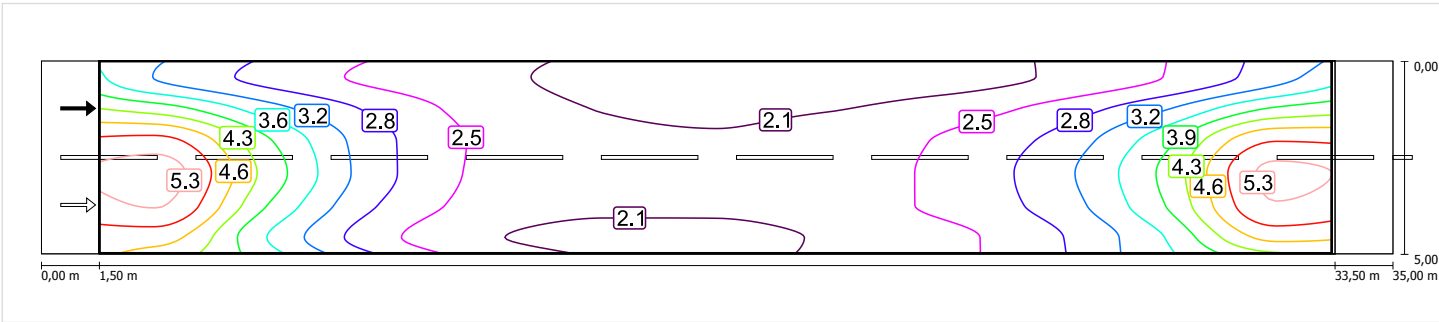
Observer 2

Luminance with dry roadway



Scale: 1 : 200

Luminance with new lamp



Scale: 1 : 200